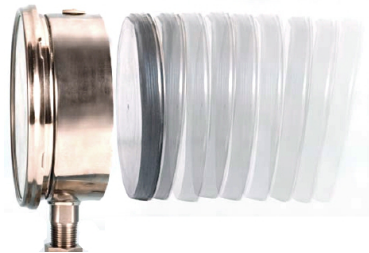


Safety Pattern- Solid Front Pr. Gauges

MODEL : SFBSPG

Features

- Safety pattern
- All SS construction
These Pressure Gauges are well suited for the Process Industries such as Chemicals, Petro-chemicals, Energy or Gas industry, Food processing, Nuclear etc.
- These version have been developed with solid baffle wall and blow out back which immediately releases in the event of accidental tube rupture .



Specifications

Dial	100/150 mm, aluminium, white background, black markings
Case	SS304, SS316 with bayonet bezel
Protection	Weatherproof to IP-67 (IS : 13947 part I)60529
Ref. standard	EN 837
Bourdon	SS316 Ti, SS316L, Monel
Socket	22 mm Square in SS 316, SS316L, SS316 Ti, Monel
Movement	SS304, SS316
Range	As EN 837 (refer table-1) minimum span 0.4 kg/cm ² , maximum 1600 kg/cm ²
Accuracy	± 1% FSD (0.5% on request)
Over range	130% FSD
Suitability	(-) 20°C to 80°C (service temperature)
Zero adjustment	Micrometer pointer (internal)
Optional	NACE compliance Liquid filled case External zero setting mechanism

Table 1

Gauge	System	Bar, kg/cm ²	Least count	
Vacuum	PB, SS	(-)1 to 0	0.02	
Compound	PB, SS	(-)1 to 0.6	0.05	
	PB, SS	(-)1 to 1.5	0.05	
	PB, SS	(-)1 to 3	0.10	
	PB, SS	(-) 1 to 5	0.10	
	PB, SS	(-)1 to 9	0.20	
	PB, SS	(-)1 to 15	0.50	
	PB, SS	(-)1 to 24	0.50	
	PB, SS	(-)1 to 39	1.0	
	Pressure Gauge ('C' shaped Bourdon)	PB, SS	0 to 0.4	0.01
		PB, SS	0 to 0.6	0.01
PB, SS		0 to 1	0.02	
PB, SS		0 to 1.6	0.05	
PB, SS		0 to 2.5	0.05	
PB, SS		0 to 4	0.10	
PB, SS		0 to 6	0.10	
PB, SS		0 to 10	0.20	
PB, SS		0 to 16	0.50	
PB,SS		0 to 25	0.50	
Pressure Gauge	PB,SS	0 to 40	1.0	
	SS	0 to 60	1.0	
	SS	0 to 100	2.0	
	SS	0 to 160	5.0	
	SS	0 to 250	5.0	
	SS	0 to 400	10.0	
Coil type Bourdon	SS	0 to 600	10.0	
	SS	0 to 800	20.0	
	SS	0 to 1000	20.0	
	SS	0 to 1600	50.0	

For range other than above please contact our design dept.

Ordering Information

MODEL : SFBSPG



MOUNTING

- V Bottom Entry, Local Mounting
- C Back Entry, Local Mounting
- B Back Entry, Surface Mounting
- S Bottom Entry, Surface Mounting

DIAL

10 - 100 mm 15 - 150 mm

CASE

- S4 SS304
- S6 SS316

BOURDON/SOCKET

- P Phosphor Bronze / Brass
- S SS316 / SS316
- L SS316L / SS316L
- M Monel / Monel
- T SS316Ti/SS316Ti

MOVEMENT

- 2 - Brass
- 4 - SS304
- 6 - SS316

CONNECTION

SIZE	TYPE	MALE / FEMALE	METRIC THREADS
6 1/4"	NT NPT	M Male	18 M - M 18 x 1.5
10 3/8"	BP BSP	F Female	20 M - M 20 x 1.5
15 1/2"	BT BSPT		24 M - M 24 x 1.5
20 3/4"	PF PF		27 M - M 27 x 2
25 1"	GS Gas		33 M - M 33 x 2
32 1.1/4"	NS NPSM		XX - Any other
40 1.1/2"			

OPTION

- A +/- 0.5% Accuracy
- C Colour band
- CE CE Certificate
- D Dual Scale
- E External Zero reset
- F Flanged process connection **
- G Glycerine Filled Case
- I IBR
- L Nil
- M Maxima Pointer
- N NACE-MR-01-75
- O O₂ Cleaning
- R 150% over range
- S Silicon oil Filled Case
- U Chemical Seal Unit-Refer Catalogue CSU
- X Accessory - Refer Catalogue ACC

UNIT

- A kg/cm² (g)
- B Bar (g)
- C Psig
- D KPa
- E mmHg
- F specify

RANGE

Specify from Table 1
minimum 0 - 0.4 kg/cm²g

F - FLANGED PROCESS CONNECTION **

Size	Code	Rating	Code	Facing	Code
1/2"	15	150#	A	RF	RF
3/4"	20	300#	B	FF	FF
1"	25	600#	C	RTJ	RTJ
1 1/2"	40	900#	D	LT	LT
2"	50	1500#	E	LG	LG
3"	80	2500#	F		

** For Flanged Process Connection refer the table (mentioned separately)

* For surface mounting, min 20 mm gap is recommended